

George Street Townhouses



Sharing the next phase of our vision for Sunderland Street

Story so far

In 2019 the Trust purchased a warehouse on George Street in Macclesfield.

It's the next stage in our plans to help breathe life back into this part of town, where we'll be building on the success of our last development, Crossings, on Park Green.

Our vision

We plan to build high-quality, affordable homes on this site, which is close to the main line train station and just a stone's throw away from some of the best bars, restaurants, studios, shops and galleries in Macclesfield.



We are at the pre-planning stage and we'd love your feedback on our early ideas by Monday 4 December.

November 2023

PEAKS & PLAINS
Housing Trust



George Street Townhouses



Our plans

- Six 3-bed townhouses with 100% parking
- Six 1-bed apartments with 30% parking
- Great quality, safe, secure, affordable homes
- A focus on quality, distinctive and characterful placemaking
- Our homes will be for rent on an affordable tenure

Your views

We would love your feedback on our proposal by **Monday 4 December 2023.**



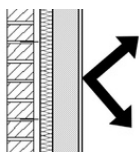
development@peaksplains.org



peaksplains.org/george-street

Our homes will feature...

Well-insulated walls



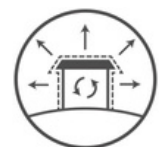
Vehicle charging points



Secure bike storage



Lower energy bills



We are currently developing our plans and hope to submit a planning application in early 2024.

November 2023

PEAKS & PLAINS
Housing Trust

