

# Sharing the Next Phase of our Vision for the Sunderland Street Corridor



June 2020

PEAKS & PLAINS  
Housing Trust



## The Opportunity

The former Hangar 7 Building located in George Street, Macclesfield



1. The Site - Formerly Hangar 7
2. George Street Mill
3. The Snow Goose Cafe Bar
4. The Treacle Tap
5. Rawle School of Dance and Performing Arts
6. Citizens Advice Cheshire North
7. Townley Street Chapel
8. Macclesfield Health Hub / South Park
9. Surgery
10. Macclesfield Train Station
11. Storm Brewing Co Ltd
12. Gradus Ltd Head office
13. Park Green Square / Macclesfield
14. Cenotaph
15. MADS Theatre
16. Alma Mill
17. St Pauls Church

## Introduction

Last year we purchased the vacant George Street warehouse building as part of our ongoing vision of creating a vibrant, lively residential community within the Sunderland Street Corridor, which aligns with Cheshire East Council's Strategic Regeneration Framework for Macclesfield Town Centre.

## Our Vision

To utilise the site to deliver an affordable and sustainable residential development of a high quality design to assist in regenerating the area. The idea is to deliver a landmark development that will deliver a high quantity of affordable homes across a mixture of Affordable Rent, Rent to Buy and Shared Ownership tenure platforms for future generations.

1. Public Art Commission (October 2018) at 108 Steps
2. Treacle Market in Market Place
3. Extract from the Macclesfield Town Centre Strategic Regeneration Framework



## Our Proposals

- 40 New Apartments
- Focus on 2-Bed Dwellings
- 100% Affordable
- 30% Parking Provision
- Great quality, safe, secure, affordable homes
- Focussed on quality, distinctive, characterful place making

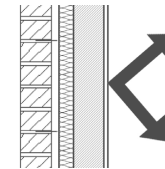


## Providing New Affordable and Sustainable Homes

Our aim is to create a sustainable place for future generations. We are developing proposals for sustainable living which could be incorporated into the design of new homes. These include:



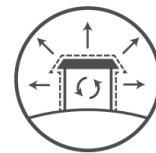
Smart electric meters to control energy consumption



Well insulated homes to help reduce energy bills



Electric car charging ports



Air Tightness



Secure Cycle Storage



Low energy ventilation system

## Next Steps

We would love to receive any observations you may have about our proposals set out in this document by Friday 3rd July.

**Please contact us by email:**  
[development@peaksplains.org](mailto:development@peaksplains.org)

We are currently developing our plans and targeting a planning application this summer.

Peaks & Plains Housing Trust  
Ropewalks  
Newton Street  
Macclesfield  
SK11 6QJ  
0800 012 1311

PEAKS & PLAINS  
Housing Trust

